



# COMMAND FUSION

PRODUCT CATALOGUE

2013

# Contents

<b>01</b>	iViewer	Control software for mobile devices
<b>02</b>	DIN-MOD4	DIN Rail 4-slot modular controller
<b>03</b>	MOD4	Rackmountable 4-slot modular controller
<b>04</b>	Modules	Overview
<b>05</b>	MOD-HRY2	2-channel 15A latching relays
<b>06</b>	MOD-RY4	4-channel 5A relay module
<b>07</b>	MOD-SSRY4	4-channel 2A solid-state module
<b>08</b>	MOD-LRY8	8-channel relay module
<b>09</b>	MOD-IO8	8-channel I/O module
<b>10</b>	MOD-COM4	4-channel COM module
<b>11</b>	MOD-IR8	8-channel IR module
<b>12</b>	CF MINI	Miniature integrated controller
<b>13</b>	LAN Bridge	Ethernet CFLink bridge
<b>14</b>	SW16	16-channel button interface
<b>15</b>	IR Blaster	IR blaster and receiver
<b>16</b>	IR Learner	Infra-red learner
<b>17</b>	IRE-Slim	Ultraslim Infrared Emitter
<b>18</b>	RACKIT	Rack-mount kit
<b>19 - 20</b>	Diagram	Residential - Whole House
<b>21 - 22</b>	Diagram	Commercial Office Building
<b>23</b>	Diagram	Boardroom
<b>24</b>	Notes	-

Product specifications are subject to change.

For the latest up to date product specifications, please visit our website:

[www.commandfusion.com](http://www.commandfusion.com)



# About Command Fusion

## Our Philosophy

The team at CommandFusion (CF) is passionate about making automation software and hardware simple, reliable and affordable. We have gone to great lengths to source like-minded veterans throughout the world to make this a reality.

We also recognise that community efforts are often more powerful and productive than our own, and as such our communication protocols for both software and hardware are fully published in detail. Community involvement is a vital part of our product evolution, with online groups and chat systems where CommandFusion engineers and support staff regularly engage with customers. This streamlines our support system whilst providing excellent resources to all customers globally.

## Product Design

In both hardware and software design, great lengths have been taken to cater for flexibility, reliability, interoperability and the future.

In software, this is reflected with GUI design which is flexible, and a Regular Expression and JavaScript engine which can handle two way communication with any networked device, parsing data into meaningful UI elements.

With hardware, CF has chosen a wired approach which can then be made wireless. Wired solutions are inherently more reliable and secure. Bus testing has been undertaken for over a year prior to commercial release, and our products are capable of withstanding common miswiring faults, voltage fluctuation and drops.

Components have been carefully chosen, the majority of which are either from USA or Japan. Our products are currently contract manufactured by a large American company, with final assembly done in Malaysia. Products currently ship from our Malaysian facility, although steps are constantly being taken to shorten shipping times by having shipping and RMA hubs in strategic locations.

We also strive to ensure our products are as environmentally friendly as possible, with brown cardboard packaging and minimal use of plastic packaging.



# iViewer & iViewer Lite

Supported Platforms



iOS (iPhone, iPad, iPod Touch) 4.3 and later



Android 2.3 and later

## Fully Customisable User Interface

- Customise using guiDesigner drag-and-drop software (Windows only).
- Unlimited pages and subpages with licence (single page is free).
- Support for independent portrait and landscape orientations to show different UI when rotating the device.
- Buttons, sliders, gauges, dynamic images, video streaming (MJPEG, H.264, MPEG-4), web page embedding, dynamic scrolling lists, text objects, graphics and input fields amongst others.
- Transitions for page flips and subpages.
- Audio file playback triggered via events.
- Gesture engine to take full advantage of multi-touch, including multiple finger touches, swipes, pinch/zoom and rotation gestures.

## Communication & Control

- Simultaneously control unlimited Ethernet devices directly from the mobile device, no other hardware required.
- Not restricted to talk to specific hardware, works with any Ethernet controllable system.
- Available communication methods:
  - TCP Server/Client
  - UDP Unicast/Broadcast/Multicast
  - HTTP/HTTPS
- Highly configurable communication sockets including heartbeats, startup events and queuing.
- Macros with customisable delays.
- Built in remote debugger tool to show status of system connections, incoming data logs, GUI object states, etc. All done via web browser connected to the device running iViewer. Supported web browsers are Chrome and Safari (Windows, Mac).

## Feedback Processing

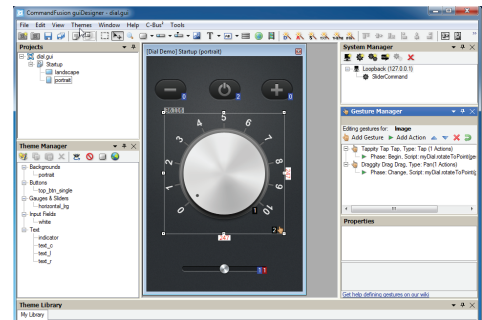
- Powerful feedback processing engine using regular expressions (regex).
- Capture data from any Ethernet device and process it for display as text, button states, slider levels, etc.
- Loopback communications to allow logic processing locally on the mobile device - great for programming UI interaction events and demonstrations.
- Highly flexible data processing without being forced to use scripting languages.

## JavaScript API

- Use the power of JavaScript to add logic scripting to your project.
- Scriptable communications with external systems allows for advanced communication handling.
- Powerful logic and string manipulation functions built in.
- Re-use modular scripts for common device integration.
- Gather data from built in sensors such as GPS, accelerometer and gyro and perform actions via scripts.
- Manipulate GUI objects for advanced animations and GUI object states.
- Automatic service discovery and publishing via Bonjour.
- Advanced event handling such as video load state changes, incoming data changes, UI interactions, sensor changes, etc.

## OEM Branding

- Service offering available to fully rebrand the app.
- Release as a new app on the app store, with customised icon, description, default user interface, etc.
- Contact us for implementation and pricing details on this service.



CommandFusion iViewer allows full two way remote control of any hardware or software capable of TCP/IP or UDP communications, directly from iOS or Android devices.

iViewer works seamlessly with our own CommandFusion hardware, as well as other systems such as Crestron, AMX, Control4, Global Caché, and any other product that can be accessed over ethernet or WiFi.

Our powerful iViewer automation engine lets you create beautiful, dynamic and animated users interfaces. Using our guiDesigner software, you have full control over how each page looks and interacts. You can fully customize the layouts, themes and interactions. Easily program animations and page transitions. Create commands and macros assigned to on-screen objects. assign actions to user gestures, and much more.

Advanced data processing is possible via our powerful data analysis engine, allowing you to automatically take action upon events received from the remote devices. In depth networking includes TCP, UDP with broadcast and multicast support.



For even more control, iViewer can be driven by JavaScript code. Our extensive programming interface allows controlling each and every aspect of the user interface and network communications. Powerful JavaScript modules provided by CommandFusion and third parties allow for unlimited extensibility and reusability.

For more information including documentation and quick start guides, see our website: <http://www.commandfusion.com/iviewer.html>

# DIN-MOD4

DIN Rail 4-slot modular controller



The DIN-MOD4 is a modular controller with 4 slots. It can be further expanded via the CFLink BUS.

- CFLink BUS device with independent processor and memory
- 1 x RS232 programming or RS232 port
- 1 x dry-contact input port
- 4 slots, fits any CF module
- MicroSD slot for memory expansion
- Memory used for storage of IR Files and event triggering

CommandFusion (CF) products are designed to simplify control system programming without compromising on functionality. CF hardware integrates easily with its mobile control apps and allows for sophisticated GUI control over any third party device.

Direct control via user interfaces, event-driven automation as well as scheduling (using the LANBridge) are all easily programmed with the free Systems Commander software. Both CF software and hardware control protocol are fully published, allowing for CF devices to be seamlessly integrated with any other software or hardware.

The CFLink BUS supports more than 100 devices, which already makes for an extremely scalable solution. Further expansion is possible via ethernet, allowing for indefinite expansion.

## CFLink

The CFLink BUS is a 5-pin 9-30 volts DC powered bus with an isolated RS485 communication line. Every CFLink device has its own processor and memory, which allows for distributed processing, simplified programming as well as eliminating the reliance on a single processor.

## CFLink Cabling

Without taking into account of power loss, standard Cat6 cabling can be used with distances over 1,000m (3,000ft) for individual runs. Cabling topology can be daisy-chain, star or a mix of both.

CONNECTIVITY	
<b>CFLink</b>	2 looped detachable 5-pin 3.81mm terminal block for CFLink BUS
<b>RS232/PGM</b>	9-pin DB9 male port for RS232 control of devices; or programming mode which allows both programming and external control of the CFLink BUS devices via RS232
<b>Input</b>	Detachable, 2-pin 3.50mm terminal block for dry contact input
<b>MicroSD slot</b>	Spring-loaded memory expansion slot
<b>Slot 1-4</b>	Slots for modules to be installed in (sold separately, shipped with 4 blank modules)
POWER	
<b>CFLink Power</b>	9-30V DC, 24V DC regulated recommended (power supply is not included)
<b>Power Consumption</b>	250mW maximum
FRONT PANEL	
<b>Power Indicator</b>	Blue LED indicates power status
<b>CFLink Fault LED</b>	Red LED indicates error on CFLink BUS
<b>CFLink Activity LED</b>	Yellow LED indicates CFLink BUS traffic
<b>Setup Button</b>	Used to start changing the CFLink ID of the unit and also factory reset
<b>Up/Down buttons</b>	Up/Down buttons used to change the CFLink ID when in setup mode
<b>Reset Button</b>	Reset button restarts the processor
<b>COM Port Button</b>	COM port button used to select program or RS232 mode for on-board RS232 port
<b>Program Indicator</b>	Yellow LED indicates on-board RS232 port is used for programming or control of CFLink BUS
<b>RS232 Indicator</b>	Yellow LED indicates on-board RS232 port is used for control of external RS232 devices
PHYSICAL	
<b>Enclosure</b>	Polycarbonate with dark grey matte finish; occupies 12 DIN module spaces (216mm)
<b>Height</b>	90mm (3.54in)
<b>Width</b>	216mm (8.50in)
<b>Depth</b>	60mm (2.36in)
<b>Weight</b>	0.57kg (1.26lbs), Shipping 0.9kg (1.98lbs)
<b>Temperature</b>	5°C to 45°C (41°F to 113°F)
<b>Humidity</b>	20% to 85% RH, non-condensing
<b>Certification</b>	FCC, CE, C-Tick
WARRANTY	
<b>Warranty</b>	5 years limited warranty



# MOD4

Rackmountable 4-slot modular controller



The MOD4 is a modular controller with 4 slots. It can be further expanded via the CFLink BUS.

- CFLink BUS device with independent processor and memory
- 1 x RS232 programming or RS232 port
- 1 x dry-contact input port
- 4 slots, fits any CF module
- MicroSD slot for memory expansion
- Memory used for storage of IR Files and event triggering

## CONNECTIVITY

<b>CFLink</b>	2 looped detachable 5-pin 3.81mm terminal block for CFLink BUS
<b>RS232/PGM</b>	9-pin DB9 male port for RS232 control of devices; or programming mode which allows both programming and external control of the CFLink BUS devices via RS232
<b>Input</b>	Detachable, 2-pin 3.50mm terminal block for dry contact input
<b>MicroSD slot</b>	Spring-loaded memory expansion slot
<b>Slot 1-4</b>	Slots for modules to be installed in (sold separately, shipped with 4 blank modules)

## POWER

<b>CFLink Power</b>	9-30V DC, 24V DC regulated recommended (power supply is not included)
<b>Power Consumption</b>	250mW maximum

## FRONT PANEL

<b>Power Indicator</b>	Blue LED indicates power status
<b>CFLink Fault LED</b>	Red LED indicates error on CFLink BUS
<b>CFLink Activity LED</b>	Yellow LED indicates CFLink BUS traffic
<b>Setup Button</b>	Used to start changing the CFLink ID of the unit and also factory reset
<b>Up/Down buttons</b>	Up/Down buttons used to change the CFLink ID when in setup mode
<b>Reset Button</b>	Reset button restarts the processor
<b>COM Port Button</b>	COM port button used to select program or RS232 mode for on-board RS232 port
<b>Program Indicator</b>	Yellow LED indicates on-board RS232 port is used for programming or control of CFLink BUS
<b>RS232 Indicator</b>	Yellow LED indicates on-board RS232 port is used for control of external RS232 devices

## PHYSICAL

<b>Enclosure</b>	Polycarbonate with dark grey matte finish; occupies 12 DIN module spaces (216mm)
<b>Height</b>	90mm (3.54in)
<b>Width</b>	216mm (8.50in)
<b>Depth</b>	60mm (2.36in)
<b>Weight</b>	0.57kg (1.26lbs), Shipping 0.9kg (1.98lbs)
<b>Temperature</b>	5°C to 45°C (41°F to 113°F)
<b>Humidity</b>	20% to 85% RH, non-condensing
<b>Certification</b>	FCC, CE, C-Tick

## WARRANTY

<b>Warranty</b>	5 years limited warranty
-----------------	--------------------------

CommandFusion (CF) products are designed to simplify control system programming without compromising on functionality. CF hardware integrates easily with its mobile control apps and allows for sophisticated GUI control over any third party device.

Direct control via user interfaces, event-driven automation as well as scheduling (using the LANBridge) are all easily programmed with the free System Commander software. Both CF software and hardware control protocols are fully published, allowing for CF devices to be seamlessly integrated with any other software or hardware.

The CFLink BUS supports more than 100 devices, which already makes for an extremely scalable solution. Further expansion is possible via ethernet, allowing for indefinite expansion.

## CFLink

The CFLink BUS is a 5-pin 9-30 volts DC powered bus with an isolated RS485 communication line. Every CFLink device has its own processor and memory, which allows for distributed processing, simplified programming as well as eliminating the reliance on a single processor.

## CFLink Cabling

Without taking into account of power loss, standard Cat6 cabling can be used with distances over 1,000m (3,000ft) for individual runs. Cabling topology can be daisy-chain, star or a mix of both.

# Available Modules



## MOD-HRY2

Relay module  
2 x 250VAC 15A latching (polarized) relays



## MOD-RY4

Relay module  
4 x 250VAC 5A non-latching normally-open relays



## MOD-LRY8

Relay module  
8 x 30VDC 1A latching (polarized) relays



## MOD-SSRY4

Solid-state relay module  
4 x 250VAC 2A non-latching normally-open solid-state relays



## MOD-IR8

Infrared module  
8 x IR outputs



## MOD-IO8

Input/Output module  
8 x configurable I/O - dry contact, voltage, resistance, LED output



## MOD-COM4

Serial port module  
2-4 x configurable RS232/422/485 bi-directional serial ports

# MOD-HRY2

2-channel 15A latching relay module



The MOD-HRY2 is a 2-channel 15A latching relay module that fits into any modular controller.

- 2 x 250 volts AC 15A latching (polarized) relays

## Overview

The HRY2 module features 2 high voltage, high-amperage (250V AC, 15A) relay ports, and comes with on-board screw terminals for secure connections to external relay controlled high voltage devices. Plug it into a modular controller to add relay control ports to your system.

## Power On States

Each relay port can be configured to be in open, closed or resume last state on power up. And because the relays are latching (polarized), they will stay in their open or closed state even when power is lost.

## Extended Functionality

Most relay control systems out there allow you to set relays on or off, and require complex programming on a control processor to perform anything else. Our relay control protocol includes additional functionality such as a simple toggle command (so that you don't have to keep track of the relay state for basic toggle actions) and a pulsing command to pulse the relay closed for a time period, then opening again (of course, the time period is customisable as part of the protocol). Relay control has never been so easy.

### CONNECTIVITY

<b>Module Connector</b>	24-pin connector to connect to modular controller unit
<b>Relay 1-2</b>	1 set of captive screw terminals consisting of 2 relay channels Wire range: 18-8 AWG Relay Rating: 250V AC 15A

### TOP PANEL

<b>Clip</b>	Secures and releases the module from the modular controller unit
<b>Label</b>	Model and serial number information.

### POWER

<b>Power Consumption</b>	Power usage 500mW maximum, powered by modular controller DIN-MOD4 or MOD4 (not included)
--------------------------	---------------------------------------------------------------------------------------------

### PHYSICAL

<b>Enclosure</b>	Polycarbonate with dark grey matte finish
<b>Height</b>	32.8mm (1.29in)
<b>Width</b>	40mm (1.57in)
<b>Depth</b>	68mm (2.68in)
<b>Weight</b>	0.07kg (0.15lbs), Shipping 0.2kg (0.44lbs)

### ENVIRONMENTAL & REGULATORY

<b>Temperature</b>	5°C to 45°C (41°F to 113°F)
<b>Humidity</b>	20% to 85% RH, non-condensing
<b>Certification</b>	FCC, CE, C-Tick

### WARRANTY

<b>Warranty</b>	5 years limited warranty
-----------------	--------------------------



# MOD-RY4

4-channel 5A relay module



The MOD-RY4 is a 4-channel 5A relay module that fits into any modular controller.

- 4 x 250 volts AC 5A non-latching normally-open relays

## CONNECTIVITY

<b>Module Connector</b>	24-pin connector to connect to modular controller unit
<b>Relay 1-4</b>	4 sets of detachable 3-pin screw terminal blocks (included) consisting of 4 normally-open relay channels Wire range: 28-14 AWG Relay Rating: 250V AC 5A

## TOP PANEL

<b>Clip</b>	Secures and releases the module from the modular controller unit
<b>Label</b>	Model and serial number information.

## POWER

<b>Power Consumption</b>	Power usage 500mW maximum, powered by modular controller DIN-MOD4 or MOD4 (not included)
--------------------------	------------------------------------------------------------------------------------------

## PHYSICAL

<b>Enclosure</b>	Polycarbonate with dark grey matte finish
<b>Height</b>	32.8mm (1.29in)
<b>Width</b>	40mm (1.57in)
<b>Depth</b>	68mm (2.68in)
<b>Weight</b>	0.07kg (0.15lbs), Shipping 0.2kg (0.44lbs)

## ENVIRONMENTAL & REGULATORY

<b>Temperature</b>	5°C to 45°C (41°F to 113°F)
<b>Humidity</b>	20% to 85% RH, non-condensing
<b>Certification</b>	FCC, CE, C-Tick

## WARRANTY

<b>Warranty</b>	5 years limited warranty
-----------------	--------------------------

## Overview

The RY4 module features 4 high voltage (250V AC, 5A) relay ports, and comes with detachable screw terminal blocks for secure connections to external relay-controlled devices. Plug it into a modular controller to add relay control ports to your system.

## Power On States

Each relay port can be configured to be in open, closed or resume last state on power up. Using the resume option, they will return to their open or closed state after a power loss.

## Extended Functionality

Most relay control systems out there allow you to set relays on or off, and require complex programming on a control processor to perform anything else. Our relay control protocol includes additional functionality such as a simple toggle command (so that you don't have to keep track of the relay state for basic toggle actions) and a pulsing command to pulse the relay closed for a time period, then opening again (of course, the time period is customisable as part of the protocol). Relay control has never been so easy.

# MOD-SSRY4

4-channel 2A solid-state module



The MOD-SSRY4 is a 4 channel 2A solid-state relay module that fits into any modular controller.

- 4 x 250 volts AC 2A non-latching normally-open solid-state relays

## CONNECTIVITY

<b>Module Connector</b>	24-pin connector to connect to modular controller unit
<b>Relay 1-4</b>	4 sets of detachable 3-pin screw terminal blocks (included) consisting of 4 normally-open relay channels Wire range: 28-14 AWG Relay Rating: 250V AC 5A

## TOP PANEL

<b>Clip</b>	Secures and releases the module from the modular controller unit
<b>Label</b>	Model and serial number information.

## POWER

<b>Power Consumption</b>	Power usage 500mW maximum, powered by modular controller DIN-MOD4 or MOD4 (not included)
--------------------------	------------------------------------------------------------------------------------------

## PHYSICAL

<b>Enclosure</b>	Polycarbonate with dark grey matte finish
<b>Height</b>	32.8mm (1.29in)
<b>Width</b>	40mm (1.57in)
<b>Depth</b>	68mm (2.68in)
<b>Weight</b>	0.07kg (0.15lbs), Shipping 0.2kg (0.44lbs)

## ENVIRONMENTAL & REGULATORY

<b>Temperature</b>	5°C to 45°C (41°F to 113°F)
<b>Humidity</b>	20% to 85% RH, non-condensing
<b>Certification</b>	FCC, CE, C-Tick

## WARRANTY

<b>Warranty</b>	5 years limited warranty
-----------------	--------------------------

## Overview

The SSRY4 module features 4 high voltage (250V AC, 2A) solid-state relay ports, and comes with detachable screw terminal blocks for secure connections to external relay-controlled high-voltage devices. Plug it into a modular controller to add relay control ports to your system. The benefit of solid-state relays are their extremely low noise (almost silent) switching, typical 10x faster switching, very much longer lifetime and more reliable (no moving parts).

## Power On States

Each relay port can be configured to be in open, closed or resume last state on power up. Using the resume option, they will return to their open or closed state after a power loss.

## Extended Functionality

Most relay control systems out there allow you to set relays on or off, and require complex programming on a control processor to perform anything else. Our relay control protocol includes additional functionality such as a simple toggle command (so that you don't have to keep track of the relay state for basic toggle actions) and a pulsing command to pulse the relay closed for a time period, then opening again (of course, the time period is customisable as part of the protocol). Relay control has never been so easy.

# MOD-LRY8

8-channel 1A latching relay module



The MOD-LRY8 is an 8-channel latching relay module that fits into any modular controller.

- 8 x 30 volts DC 1A latching (polarized) relays

CONNECTIVITY	
<b>Module Connector</b>	24-pin connector to connect to modular controller unit
<b>Relay 1-8</b>	4 x detachable 4-pin 3.50mm terminal block consisting of 8 channels of relay ports. Wire range: 24-16 AWG Relay Rating: 30V DC 1A
TOP PANEL	
<b>Clip</b>	Secures and releases the module from the modular controller unit
<b>Label</b>	Model and serial number information.
POWER	
<b>Power Consumption</b>	Power usage 600mW maximum, powered by modular controller DIN-MOD4 or MOD4 (not included)
PHYSICAL	
<b>Enclosure</b>	Polycarbonate with dark grey matte finish
<b>Height</b>	32.8mm (1.29in)
<b>Width</b>	40mm (1.57in)
<b>Depth</b>	68mm (2.68in)
<b>Weight</b>	0.08kg (0.18lbs), Shipping 0.2kg (0.44lbs)
ENVIRONMENTAL & REGULATORY	
<b>Temperature</b>	5°C to 45°C (41°F to 113°F)
<b>Humidity</b>	20% to 85% RH, non-condensing
<b>Certification</b>	FCC, CE, C-Tick
WARRANTY	
<b>Warranty</b>	5 years limited warranty

## Overview

The LRY8 module features 8 low voltage (30V DC, 1A) relay ports, and comes with spring terminals for quick and easy, yet secure connections to external relay-controlled devices. Plug it into a modular controller to add relay control ports to your system.

## Power On States

Each relay port can be configured to be in open, closed or resume last state on power up. And because the relays are latching (polarized), they will stay in their open or closed state even when power is lost.

## Extended Functionality

Most relay control systems out there allow you to set relays on or off, and require complex programming on a control processor to perform anything else. Our relay control protocol includes additional functionality such as a simple toggle command (so that you don't have to keep track of the relay state for basic toggle actions) and a pulsing command to pulse the relay closed for a time period, then opening again (of course, the time period is customisable as part of the protocol). Relay control has never been so easy.

# MOD-IO8

8-channel I/O module



The MOD-IO8 is an 8 channel I/O module that fits into any modular controller.

- 8 channels of I/O programmable to be either digital input, analog voltage or resistance input read or LED output

## CONNECTIVITY

<b>Module Connector</b>	24-pin connector to connect to modular controller unit
<b>I/O 1-8</b>	2 detachable 4-pin 3.5mm spring terminal blocks for GPIO modes: <ul style="list-style-type: none"> <li>- Digital input mode for dry contact inputs</li> <li>- Analog input mode for: 0-10 Volts DC read (0.1 V increments), 0-10k Ohms resistance read (100 Ohm increments), Voltage sensing input (adjustable thresholds), video sensing input</li> <li>- Digital output mode for: LED output (5V DC, 1mA max), External relay control (separate relay power supply required)</li> </ul>

## TOP PANEL

<b>Clip</b>	Secures and releases the module from the modular controller unit
<b>Label</b>	Model and serial number information.

## POWER

<b>Power Consumption</b>	Power usage 500mW maximum, powered by modular controller DIN-MOD4 or MOD4 (not included)
--------------------------	------------------------------------------------------------------------------------------

## PHYSICAL

<b>Enclosure</b>	Polycarbonate with dark grey matte finish
<b>Height</b>	32.8mm (1.29in)
<b>Width</b>	40mm (1.57in)
<b>Depth</b>	68mm (2.68in)
<b>Weight</b>	0.05kg (0.11lbs), Shipping 0.2kg (0.44lbs)

## ENVIRONMENTAL & REGULATORY

<b>Temperature</b>	5°C to 45°C (41°F to 113°F)
<b>Humidity</b>	20% to 85% RH, non-condensing
<b>Certification</b>	FCC, CE, C-Tick

## WARRANTY

<b>Warranty</b>	5 years limited warranty
-----------------	--------------------------

## Overview

The IO8 module features 8 user configurable I/O ports, and comes with spring terminals for quick and easy, yet secure connections to external inputs/sensors/outputs. Plug it into a modular controller to add I/O ports to your system.

## Notifications

The IO8 can be setup to send notifications based on a configurable minimum change level per port. Notifications can be sent as a broadcast to all CFLink devices, to specific CFLink IDs or both.

## Dry Contact Input

When a port is configured as a dry contact input, it will give a reading on it's open/closed state. Used for button inputs, sensor triggers, etc.

## Resistance Reading Input

When a port is configured as a resistance reading input, it can measure input ranging from 0 Ohm to 10,000 Ohm, in 100 Ohm increments. Used for light sensors, temperature sensors, etc.

## Voltage Reading Input

When a port is configured as a voltage reading input, it can measure input ranging from 0V DC to 10V DC, in 0.1 Volt increments. Used for battery level sensors, video signal sensors, etc.

## LED Output

When a port is configured as an LED output, it can be set to on or off state, 3.3V DC 1mA max.



# MOD-COM4

4-channel COM module



The MOD-COM4 is a 2 to 4 channel COM module that fits into any modular controller.

- 2 to 4 channels of RS232, RS422 or RS485 serial communication ports

CONNECTIVITY	
<b>Module Connector</b>	24-pin connector to connect to modular controller unit
<b>COM 1-4</b>	2 x detachable 6-pin 3.50mm terminal block consisting of 2 to 4 channels of serial ports. Wire range: 24-16AWG
TOP PANEL	
<b>Clip</b>	Secures and releases the module from the modular controller unit
<b>Label</b>	Model and serial number information.
POWER	
<b>Power Consumption</b>	Power usage 200mW maximum, powered by modular controller DIN-MOD4 or MOD4 (not included)
PHYSICAL	
<b>Enclosure</b>	Polycarbonate with dark grey matte finish
<b>Height</b>	32.8mm (1.29in)
<b>Width</b>	40mm (1.57in)
<b>Depth</b>	68mm (2.68in)
<b>Weight</b>	0.05kg (0.11lbs), Shipping 0.2kg (0.44lbs)
ENVIRONMENTAL & REGULATORY	
<b>Temperature</b>	5°C to 45°C (41°F to 113°F)
<b>Humidity</b>	20% to 85% RH, non-condensing
<b>Certification</b>	FCC, CE, C-Tick
WARRANTY	
<b>Warranty</b>	5 years limited warranty

## Overview

The COM4 module features 2-4 user configurable serial ports, and comes with spring terminals for quick and easy, yet secure connections to control external serial devices. Plug it into a modular controller to add serial port control to your system.

## Serial Ports

The number of available serial ports depends on the modes they are configured in. For instance, 4 separate ports can be defined for RS232 without flow control. But only 2 ports can be configured if both set to RS485.

## Passthrough Modes

Any device on the CFLink network, including the COM4 module, can be configured to passthrough their incoming and outgoing data to the LAN Bridge, for direct Ethernet access (TCP or UDP).

## Notifications

The COM4 can be setup to send notifications of incoming data per port. Notifications can be sent as a broadcast to all CFLink devices, to specific CFLink IDs or both.

# MOD-IR8

8-channel IR module



The MOD-IR8 is an 8 channel infra-red module that fits into any modular controller.

- 8 channels of IR outputs for wired emitters
- On board IR library with over 500,000 non-unique codes

## Overview

The IR8 module features 8 stackable IR outputs, and comes with spring terminals for quick and easy, yet secure connections to IR emitters. 8 x single-headed IR emitters are included. Plug it into a modular controller to add IR ports to your system.

## Advanced IR Control

All modular controllers are capable of advanced IR functionality such as smooth IR repeating, on-board IR database and storing IR codes in on-board memory. The IR8 module can be used in any modular controller to take advantage of all this functionality.

## Stackable IR outputs

Stackable IR outputs allow you to control more than one device from a single port. Either by using multi-headed emitters, or wiring multiple emitters to the same port.

### CONNECTIVITY

<b>Module Connector</b>	24-pin connector to connect to modular controller unit
<b>IR 1-8</b>	4 x detachable 4-pin 3.50mm terminal block consisting of 8 channels of infrared ports. Wire range: 24-16AWG

### TOP PANEL

<b>Clip</b>	Secures and releases the module from the modular controller unit
<b>Label</b>	Model and serial number information.

### POWER

<b>Power Consumption</b>	Power usage 200mW maximum, powered by modular controller DIN-MOD4 or MOD4 (not included)
--------------------------	------------------------------------------------------------------------------------------

### PHYSICAL

<b>Enclosure</b>	Polycarbonate with dark grey matte finish
<b>Height</b>	32.8mm (1.29in)
<b>Width</b>	40mm (1.57in)
<b>Depth</b>	68mm (2.68in)
<b>Weight</b>	0.05kg (0.11lbs), Shipping 0.2kg (0.44lbs)

### ENVIRONMENTAL & REGULATORY

<b>Temperature</b>	5°C to 45°C (41°F to 113°F)
<b>Humidity</b>	20% to 85% RH, non-condensing
<b>Certification</b>	FCC, CE, C-Tick

### WARRANTY

<b>Warranty</b>	5 years limited warranty
-----------------	--------------------------



# CF Mini

Miniature integrated controller



The CF Mini is a multi-purpose all-in-one controller specifically designed for single room to mid-size installations.

- CFLink BUS device with independent processor and memory
- 1 x RS232 programming or RS232 port
- 8 x IR outputs for wired emitters, with onboard IR library for over 500,000 non-unique codes
- 4 channels of I/O either as digital input, voltage or resistance input read or LED output
- 4 x 30 volts DC 1A latching relay
- MicroSD slot for memory expansion
- Memory used for storage of IR Files and event triggering

## Overview

The CF Mini is a powerful, all-in-one controller. It features 8 x IR outputs, 4 x configurable I/O ports, 4 x 30VDC latching relays and one RS232/Program port.

Featuring a variety of control methods in a single box, the CF Mini is perfect for single room installs such as home theatres and boardrooms, as well as distributed systems such as classrooms.

## Combine with LAN Bridge

The CF Mini does not feature an Ethernet port. Instead, the CFLink port is used to expand your system with any other CFLink devices. The LAN Bridge is a perfect companion for the CF Mini, for a very affordable single room solution when controlled by a mobile device such as the Apple iPad.

## Rules Engine

All CFLink devices, including the CF Mini, support a powerful rule triggering engine. This allows you to trigger macros to run when a specific event occurs - such as reading a specific value via the I/O ports, or on incoming data via the RS232 port. Using the rules engine, you can setup basic or complex automation actions.

## On-board IR Database

All IR emitting devices in the CommandFusion range include an on-board IR database, with over 500,000 IR codes built in.

## CONNECTIVITY

<b>CFLink</b>	Detachable 5-pin 3.81mm terminal block for CFLink BUS
<b>COM</b>	6-pin RJ11 female port for RS232 control of devices; or programming mode which allows both programming and external control of the CFLink BUS devices
<b>IR 1-8</b>	4 detachable 4-pin 3.5mm spring terminal blocks for infrared emitters
<b>I/O 1-4</b>	2 detachable 4-pin 3.5mm spring terminal blocks for GPIO modes: <ul style="list-style-type: none"> <li>- Digital input mode for dry contact inputs</li> <li>- Analog input mode for: 0-10 Volts DC read (0.1 V increments), 0-10k Ohms resistance read (100 Ohm increments), Voltage sensing input (adjustable thresholds), video sensing input</li> <li>- Digital output mode for: LED output (5V DC, 1mA max), External relay control (separate relay power supply required)</li> </ul>
<b>Relay 1-4</b>	2 detachable 4-pin 3.5mm spring terminal blocks for latching relays; rated 1A 30 volts AC/DC
<b>MicroSD Slot</b>	Spring-loaded memory expansion slot (card not included)

## POWER

<b>CFLink Power</b>	9-30V DC, 24V DC regulated recommended (power supply is not included)
<b>Power Consumption</b>	4W maximum

## TOP PANEL

<b>Power Indicator</b>	Blue LED indicates power status
<b>CFLink Fault LED</b>	Red LED indicates error on CFLink BUS
<b>CFLink Activity LED</b>	Yellow LED indicates CFLink BUS traffic
<b>Setup Button</b>	Setup button used for factory reset
<b>Reset Button</b>	Reset button restarts the processor
<b>Prog Indicator</b>	Yellow LED indicates RS232 port is used for programming or control of CFLink BUS
<b>RS232 Indicator</b>	Yellow LED indicates RS232 port is used for control of RS232 devices
<b>Status Indicator</b>	Yellow LED indicates status/activity on any of the CF Mini on-board ports (configurable)

## PHYSICAL

<b>Enclosure</b>	Polycarbonate with dark grey matte finish
<b>Height</b>	61mm (2.40in)
<b>Width</b>	81.4mm (3.2in)
<b>Depth</b>	76.4mm (3.0in)
<b>Weight</b>	0.22kg (0.49lbs), Shipping 0.4kg (0.88lbs)
<b>Temperature</b>	5°C to 45°C (41°F to 113°F)
<b>Humidity</b>	20% to 85% RH, non-condensing
<b>Certification</b>	FCC, CE, C-Tick

## WARRANTY

<b>Warranty</b>	5 years limited warranty
-----------------	--------------------------

# LAN Bridge

Ethernet & RS232 CFLink bridge



The LAN Bridge provides an Ethernet interface to all CFLink devices, supporting a variety of Ethernet protocols and communication options.

- CFLink BUS device with independent processor and memory
- 1 x Ethernet socket for wired LAN connectivity
- 1 x RS232 programming or RS232 port
- Realtime clock with scheduling support
- MicroSD slot for memory expansion
- Memory used for storage of IR Files and event triggering

## Overview

The LAN Bridge is the Ethernet & RS232 gateway for all devices connected via the CFLink bus. It has many advanced networking features, including the ability to communicate via TCP Server, TCP Client, UDP Unicast and UDP Broadcast, all at the same time.

10 different communication slots can be defined, each with its own configuration of protocol type, port, and other options. A maximum of 25 total TCP socket connections can be shared between each defined slot.

## Scheduling

The on-board realtime clock allows the LAN Bridge to be used for scheduling of events, as well as randomised "away mode" events for security reasons. The clock can be configured to sync with a time server to ensure it's automatically updated in regions with Daylight Savings requirements.

### CONNECTIVITY

<b>CFLink</b>	Detachable 5-pin 3.81mm terminal block for CFLink BUS
<b>RS232/PGM</b>	6-pin RJ11 female port for RS232 control of devices; or programming mode which allows both programming and external control of the CFLink BUS devices via RS232.
<b>Ethernet</b>	RJ45 female port for Ethernet connectivity, with two LED status lights for data transmission and connectivity status.
<b>MicroSD slot</b>	Spring-loaded memory expansion slot

### POWER

<b>CFLink Power</b>	9-30V DC, 24V DC regulated recommended (power supply is not included)
<b>Power Consumption</b>	2W maximum

### TOP PANEL

<b>Power Indicator</b>	Blue LED indicates power status
<b>CFLink Fault LED</b>	Red LED indicates error on CFLink BUS
<b>CFLink Activity LED</b>	Yellow LED indicates CFLink BUS traffic
<b>Setup Button</b>	Setup button used to select program or RS232 mode for RS232 port and also factory reset
<b>Reset Button</b>	Reset button restarts the processor
<b>Prog Indicator</b>	Yellow LED indicates RS232 port is used for programming or control of CFLink BUS
<b>RS232 Indicator</b>	Yellow LED indicates RS232 port is used for control of RS232 devices
<b>Status Indicator</b>	Yellow LED indicates data being sent/received via the RS232 port

### PHYSICAL

<b>Enclosure</b>	Polycarbonate with dark grey matte finish
<b>Height</b>	41mm (1.61in)
<b>Width</b>	81.4mm (3.2in)
<b>Depth</b>	76.4mm (3.0in)
<b>Weight</b>	0.13kg (0.29lbs), Shipping 0.3kg (0.66lbs)
<b>Temperature</b>	5°C to 45°C (41°F to 113°F)
<b>Humidity</b>	20% to 85% RH, non-condensing
<b>Certification</b>	FCC, CE, C-Tick

### WARRANTY

<b>Warranty</b>	5 years limited warranty
-----------------	--------------------------

# SW16

16-channel button interface



The SW16 is a 16-channel button interface for custom-made button panels.

- CFLink BUS device with independent processor and memory
- 16 x digital inputs for buttons
- 16 x dimmable LED outputs for indicators
- 4 x dimmable LED outputs for backlight

## Overview

The SW16 is used to interface physical buttons to the CFLink network. With 16 x Dry contact inputs, you can connect up to 16 momentary or toggle switches to control your automation system. The 16 channels of dimmable LED outputs allow you to show feedback states for the buttons, and 4 dimmable backlight LED outputs can be used to backlight your keypad if required.

## Dimmable LED Outputs

The 16 dimmable LED outputs and 4 dimmable backlight LED outputs can be controlled via the CFLink protocol. This allows you to not only turn these LEDs on and off, but you can set the dimming level of the individual outputs, in 100 steps. There are also commands to ramp between levels, blink the LED (set number of times or continuously) and dim up/down in a loop. This means you can show all sorts of feedback states via these LED outputs. You could even use 3 channels of the LED outputs to drive a single RGB LED for multi-color feedback states.

## Custom Button Panels

Although you could use any off the shelf button panel and wire the buttons up to the SW16, you could also create your own custom button panels to suit any task. Put a few buttons together on a wall plate material of your choosing, and create physical interfaces for industrial automation tasks.

CONNECTIVITY	
<b>CFLink</b>	Detachable 5-pin 3.81mm terminal block for CFLink BUS
<b>40 pin connector</b>	40-pin ribbon cable (included) 16 digital inputs (pins 1-16) referenced to ground 16 dimmable LED outputs 4 dimmable backlight LED outputs 3.3V / 5V header for selecting LED voltages
<b>MicroSD Slot</b>	Spring-loaded memory expansion slot (card not included)
POWER	
<b>CFLink Power</b>	9-30V DC, 24V DC regulated recommended (power supply is not included)
<b>Power Consumption</b>	2W maximum
TOP PANEL	
<b>Power Indicator</b>	Blue LED indicates power status
<b>CFLink Fault LED</b>	Red LED indicates error on CFLink BUS
<b>CFLink Activity LED</b>	Yellow LED indicates CFLink BUS traffic
<b>Setup Button</b>	Setup button used for factory reset
<b>Reset Button</b>	Reset button restarts the processor
<b>Input Indicator</b>	Yellow LED indicates one of the dry contact inputs is closed
<b>LED Indicator</b>	Yellow LED indicates one of the dimmable LED outputs is on
<b>BLight Indicator</b>	Yellow LED indicates one of the dimmable backlight LED outputs is on
PHYSICAL	
<b>Enclosure</b>	Polycarbonate with dark grey matte finish
<b>Height</b>	31.5mm (1.24in)
<b>Width</b>	81.4mm (3.2in)
<b>Depth</b>	76.4mm (3.0in)
<b>Weight</b>	0.11kg (0.24lbs), Shipping 0.3kg (0.66lbs)
<b>Temperature</b>	5°C to 45°C (41°F to 113°F)
<b>Humidity</b>	20% to 85% RH, non-condensing
<b>Certification</b>	FCC, CE, C-Tick
WARRANTY	
<b>Warranty</b>	5 years limited warranty

# IR Blaster

IR blaster and receiver



## CONNECTIVITY

<b>CFLink</b>	Detachable 5-pin 3.81mm terminal block for CFLink BUS
<b>IR Out</b>	3.5mm mini phone jack for external IR emitter (included)
<b>IR In</b>	3.5mm mini phone jack for external IR receiver (not included)
<b>MicroSD slot</b>	Spring-loaded memory expansion slot

## FRONT PANEL

<b>IR Blaster</b>	High-powered infrared blaster built-in, with over 270° coverage
<b>IR Receiver</b>	On-board infrared receiver, front facing

## POWER

<b>CFLink Power</b>	9-30V DC, 24V DC regulated recommended (power supply is not included)
<b>Power Consumption</b>	1W maximum

## TOP PANEL

<b>Power Indicator</b>	Blue LED indicates power status
<b>CFLink Fault LED</b>	Red LED indicates error on CFLink BUS
<b>CFLink Activity LED</b>	Yellow LED indicates CFLink BUS traffic
<b>Setup Button</b>	Setup button used for factory reset
<b>Reset Button</b>	Reset button restarts the processor
<b>Blast Indicator</b>	Yellow LED indicates IR signal being sent via on-board Blaster output
<b>Out 2 Indicator</b>	Yellow LED indicates IR signal being sent via 3.5mm IR output connector
<b>Recv Indicator</b>	Yellow LED indicates IR signal being received via either the on-board IR receiver or the 3.5mm input connector

## PHYSICAL

<b>Enclosure</b>	Polycarbonate with dark grey matte finish
<b>Height</b>	32mm (1.26in)
<b>Width</b>	81.4mm (3.2in)
<b>Depth</b>	76.4mm (3.0in)
<b>Weight</b>	0.11kg (0.24lbs), Shipping 0.3kg (0.66lbs)
<b>Temperature</b>	5°C to 45°C (41°F to 113°F)
<b>Humidity</b>	20% to 85% RH, non-condensing
<b>Certification</b>	FCC, CE, C-Tick

## WARRANTY

<b>Warranty</b>	5 years limited warranty
-----------------	--------------------------

The IR Blaster can flood a room with IR and can be used standalone to convert any remote into a universal remote, with macro capabilities.

- CFLink BUS device with independent processor with on-board IR library with over 500,000 non-unique codes
- On-board IR blaster with over 270° coverage
- On-board IR receiver
- Independent second IR port for wired emitter
- Independent second wired IR receiver port
- MicroSD slot for memory expansion
- Memory used for storage of IR Files and event triggering

## Overview

The IR Blaster is a multi-functional IR control device. Featuring a 270° IR blaster on-board, as well as an additional 3.5mm jack for an IR emitter, you get the best of both IR control worlds - room flooding and directional control.

## IR Receiver

The on-board IR receiver and additional 3.5mm jack for an IR receiver (not included), provide a way use the incoming IR signal to trigger macros via the Rules Engine. So you can use any IR remote control to perform actions throughout your automation system, such as control your lights or security system.

## IR Database & Storage

All IR emitting devices in the CommandFusion range include an on-board IR database, with over 500,000 IR codes built in. If the device you want to control doesn't exist in the database, simply use our IR Learner to learn the IR codes and create an IR file ready for storage directly in the IR Blaster's on-board memory.



# IR Learner

USB Infrared Learner



The IR Learner is a tiny USB device capable of learning infrared remotes from 30kHz to 455kHz. It has also been engineered to handle long and complex infrared codes typically found in higher end split system air conditioners.

- IR learning from 30kHz to 455kHz
- Able to learn long IR codes
- Onboard IR library with over 500,000 non-unique codes
- Onboard IR blaster with over 120° coverage for testing

## Overview

The only IR Learner you will ever need. About the size of a matchbox, the IR Learner is capable of learning any IR code and then testing it for accuracy via the on-board blaster output. The front IR window is used for learning, with the rear IR window housing the blaster output.

### CONNECTIVITY & POWER

**Mini USB** Mini USB female connector (Type B). USB cable included.

### FRONT PANEL

**IR Receiver** On-board infrared receiver, front facing, capable of learning 30kHz to 455kHz IR signals

### REAR PANEL COMPONENTS

**IR Blaster** High-powered IR Blaster on-board, with over 120° coverage

### TOP PANEL

**Power Indicator** Blue LED indicates power status

**Activity Indicator** Yellow LED indicates IR signal being sent or received

**Ready Indicator** Green LED indicates IR learning is completed

**Reset Button** Reset button used to restart the device

### PHYSICAL

**Enclosure** Polycarbonate with dark grey matte finish

**Height** 17mm (0.67in)

**Width** 60mm (2.36in)

**Depth** 44mm (1.73in)

**Weight** 0.04kg (0.09lbs), Shipping 0.2kg (0.44lbs)

**Temperature** 5°C to 45°C (41°F to 113°F)

**Humidity** 20% to 85% RH, non-condensing

**Certification** FCC, CE, C-Tick

### WARRANTY

**Warranty** 5 years limited warranty

# IRE-Slim

Ultraslim Infrared Emitter



## CONNECTIVITY

<b>Connector</b>	3.5mm mini phono jack (easily removed for devices requiring bare wire connections, such as our MOD-IR8 module)
------------------	----------------------------------------------------------------------------------------------------------------

## In The Box

<b>IR Emitter</b>	x 1
<b>3M® sticker pads</b>	x 1 pre-applied, x 2 extras
<b>IR Shield</b>	x 1 with 3M® adhesive pre-applied

## PHYSICAL

<b>Emitter Head</b>	12.9mm x 8mm x 2.4mm
<b>Cable Length</b>	2m
<b>Wire Gauges</b>	AWG22 (1m, phono jack end), AWG28 (1m, emitter end)
<b>3M® Adhesive Pads</b>	12.9mm x 8mm x 0.5mm
<b>IR Shield (with 3M® adhesive)</b>	35mm x 20mm x 1mm (flat area), 3.6mm max thickness

## WARRANTY

<b>Warranty</b>	5 years limited warranty
-----------------	--------------------------

The ultimate IR probe - IRE-Slim is a tiny, inconspicuous, subtle and unobtrusive IR emitter without compromise.

- Only 2.4mm thin
- Thicker gauge figure 8 cable where it's hidden - easy to extend
- Ultrathin cable where it's visible
- Additional adhesive pads and IR shield included

## Overview

The IRE-Slim emitter is an infrared probe designed by custom integrators, for custom integrators. Featuring the thinnest emitting head, slimmest 3.5mm phono jack, smoothly designed wire gauge step down join and useful accessories.

## Easy to Extend and Install

The wire gauge (thickness of wire) and figure 8 insulation allows it to be easily extended for longer cable runs. Every aspect of the cable has been designed and moulded to be as thin as possible without compromising on strength. The wire join is designed to be snag-free and the wire leading up to the emitter is ultra-thin to be as hidden as possible.

## Added Accessories

Each IR emitter is shipped with two additional high quality 3M® sticker pads for reuse, as well as a moulded shield with 3M adhesive to cover the emitter and prevent external IR control or interference for the most reliable IR control possible.



# RACKIT

Rack-mount kit



Rack-mount kit for 2 x MOD4 controllers.

- 1RU (rack unit) high, full 19" rack width.
- Locking tabs and cable management.

## PHYSICAL

<b>Material</b>	Steel with dark grey matte finish
<b>Height</b>	43mm (1.69in), 1RU
<b>Width</b>	482.6mm (19in)
<b>Width (internal shelf)</b>	441mm (17.36in)
<b>Depth</b>	458mm (18in)
<b>Weight</b>	1.6kg (3.52lbs), Shipping 2.0kg (4.41lbs)

## WARRANTY

<b>Warranty</b>	5 years limited warranty
-----------------	--------------------------

## Overview

The RACKIT allows for one or two MOD4's to be rack mounted in a standard 19" rack, taking up just 1RU height, great for those installations where rack space is at a premium. The RACKIT incorporates a number of cable management and installation features to ensure an easy, high quality installation.

## Cable Management

Utilise the cable management features of the RACKIT to achieve a quality installation. Cable management features includes:

- Tie down locations to utilise cable ties and velcro strips
- Various cutouts to allow for flexible cable routing

## Ease of Installation and Maintenance

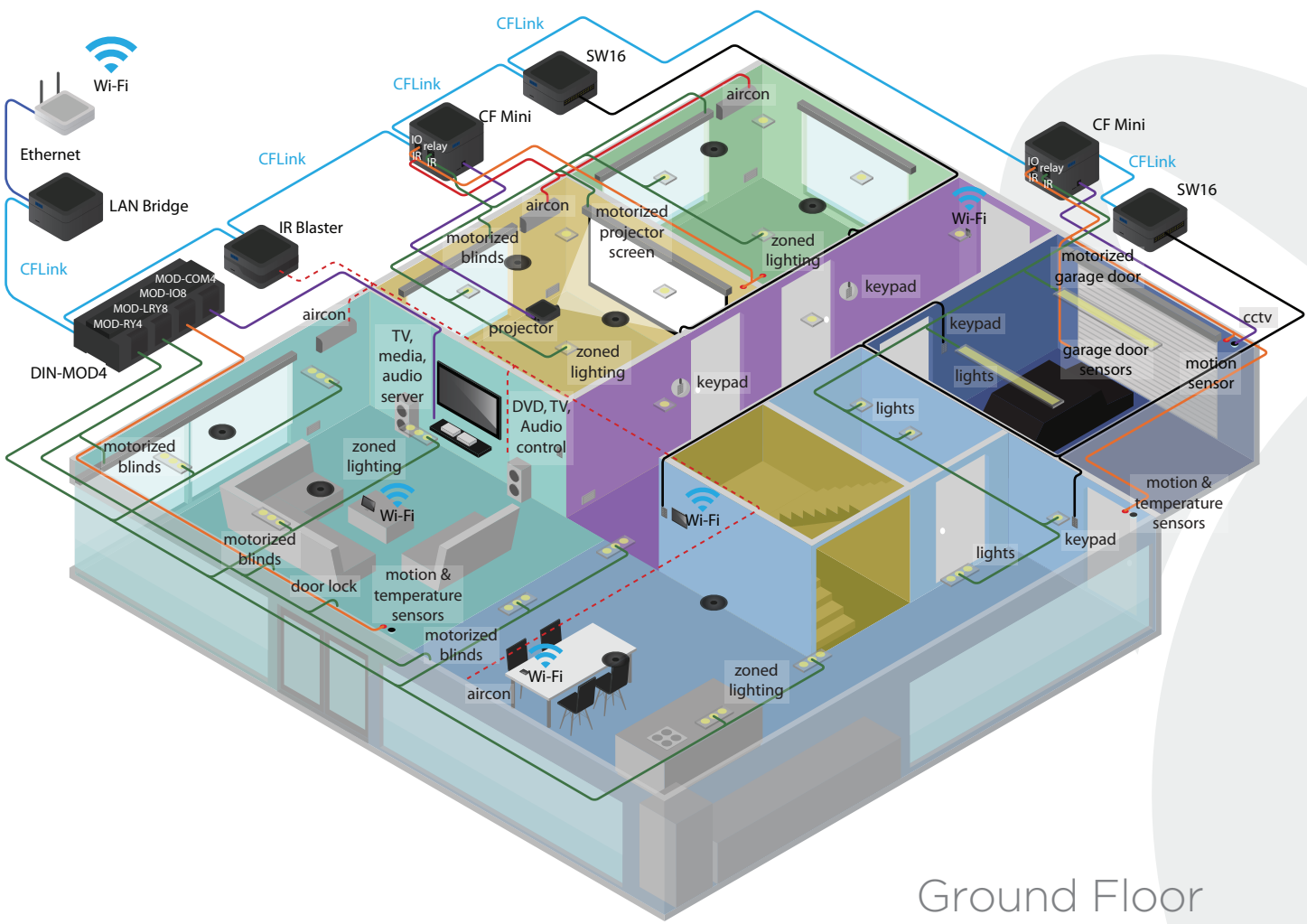
The RACKIT was designed by integrators to allow for maximum ease of installation and access for maintenance.

- Spring loaded locking tabs
- Secondary screw locations for security
- Guides to ensure neat installation
- Sliding action of MOD4 with guide tabs to ensure access to modules is easy, without risk of connector damage or the unit falling out of the RACKIT

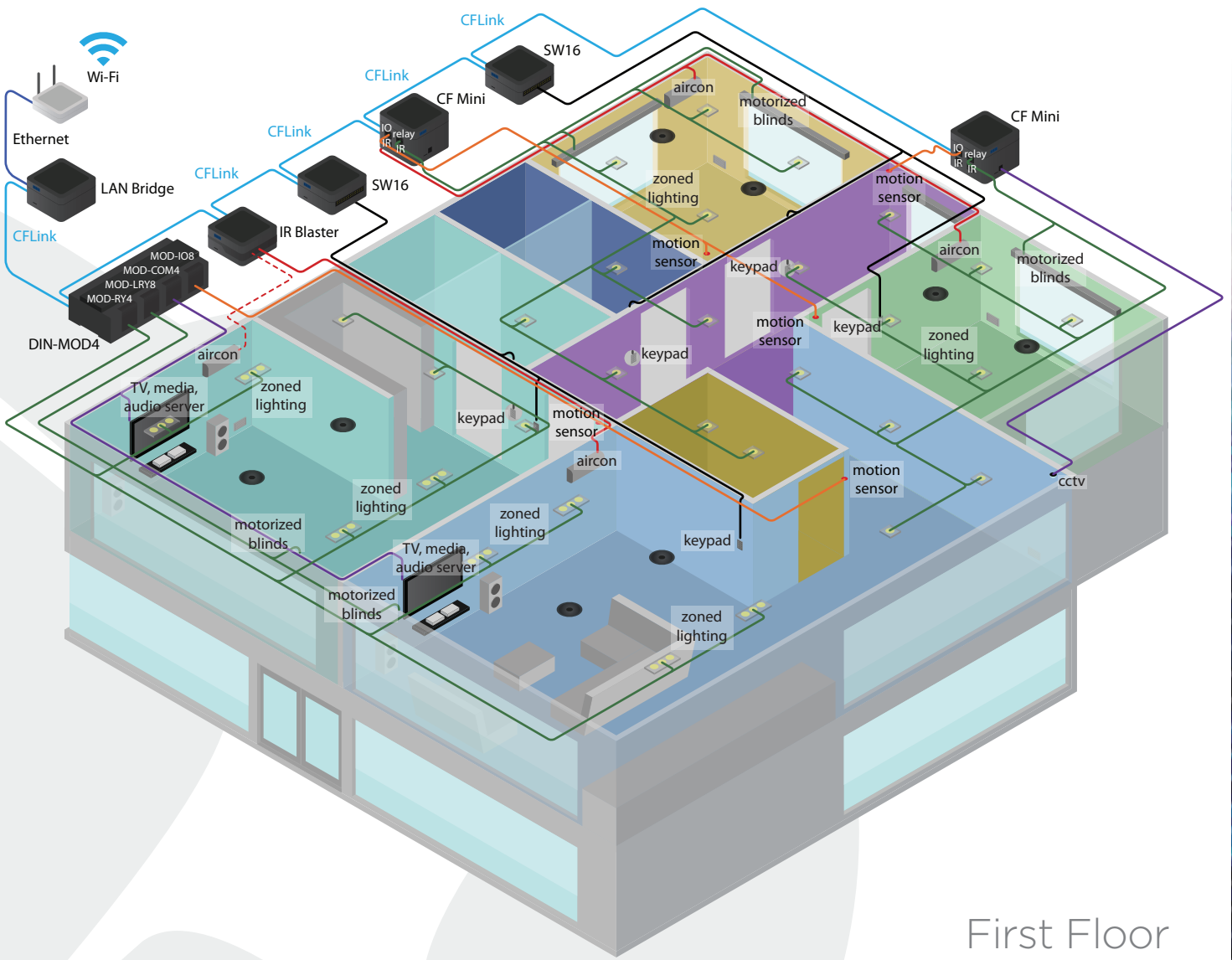
## Residential Application Diagram - Whole House



- Ethernet
- CFLink
- Relays
- Input/Output
- Serial
- Button Inputs / LED Outputs
- IR Emitter
- IR Blaster
- DALI

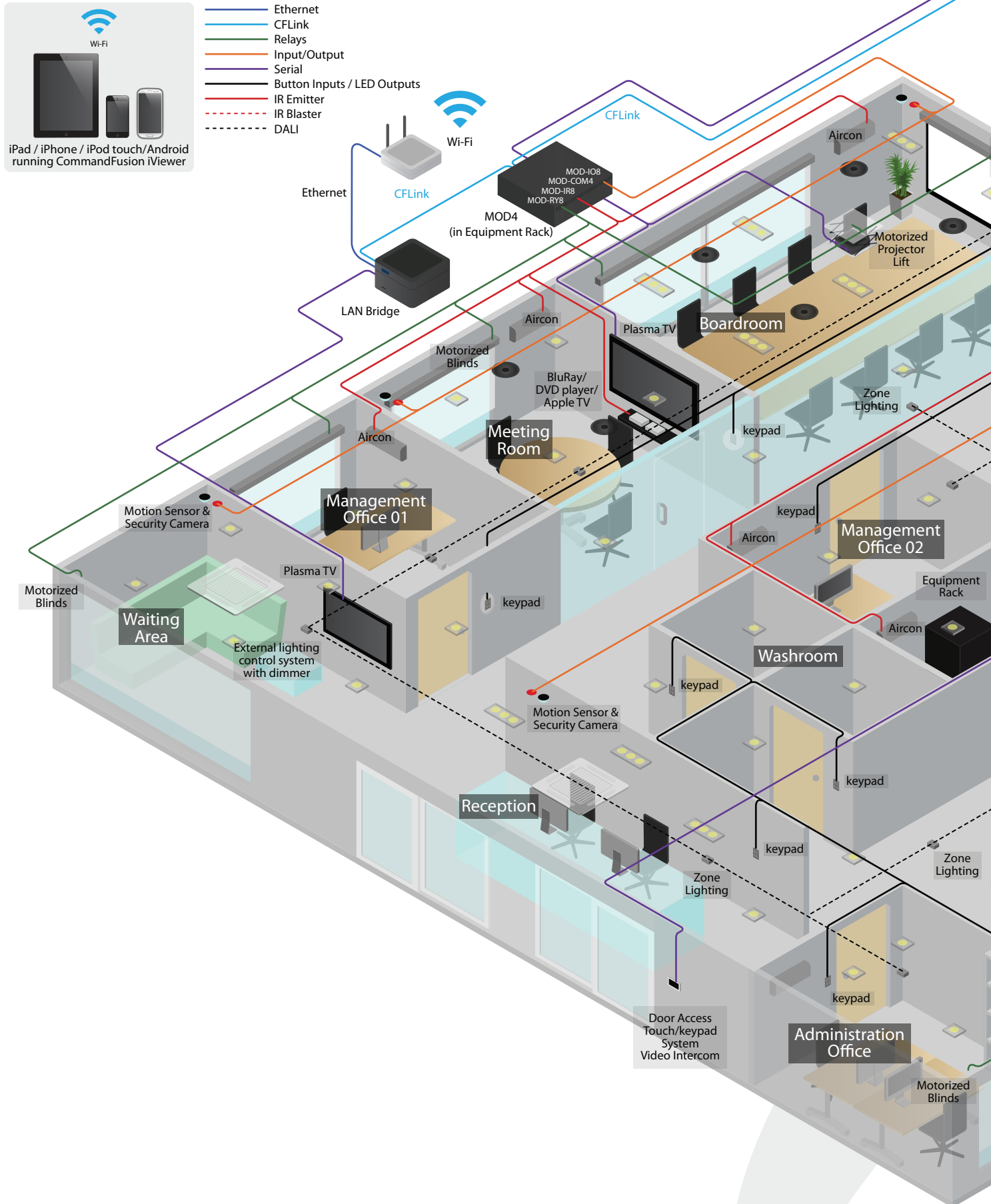


Ground Floor



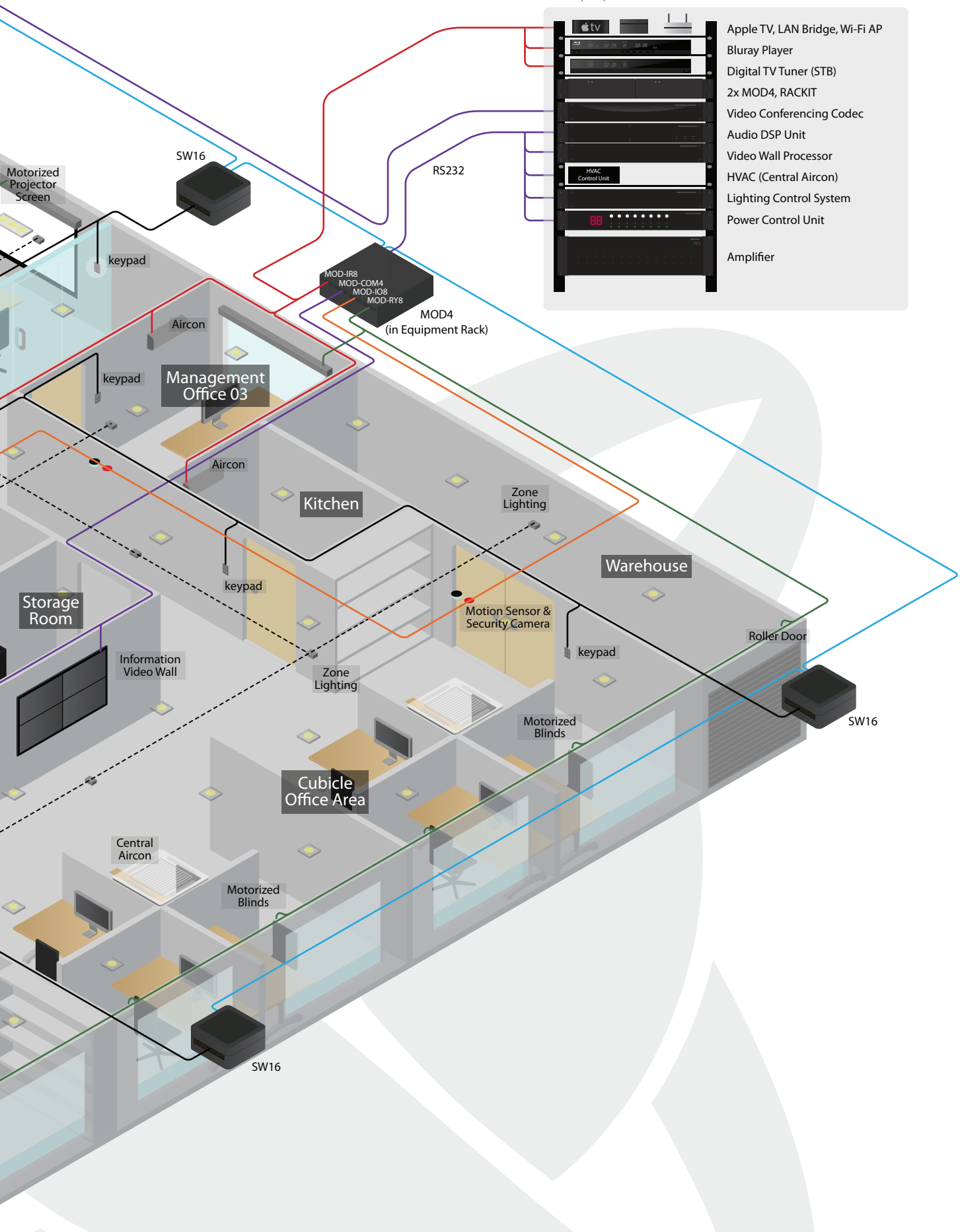
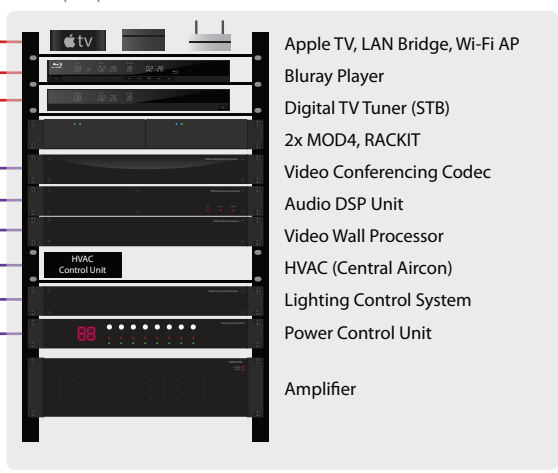
First Floor

# Commercial Office Building Application Diagram

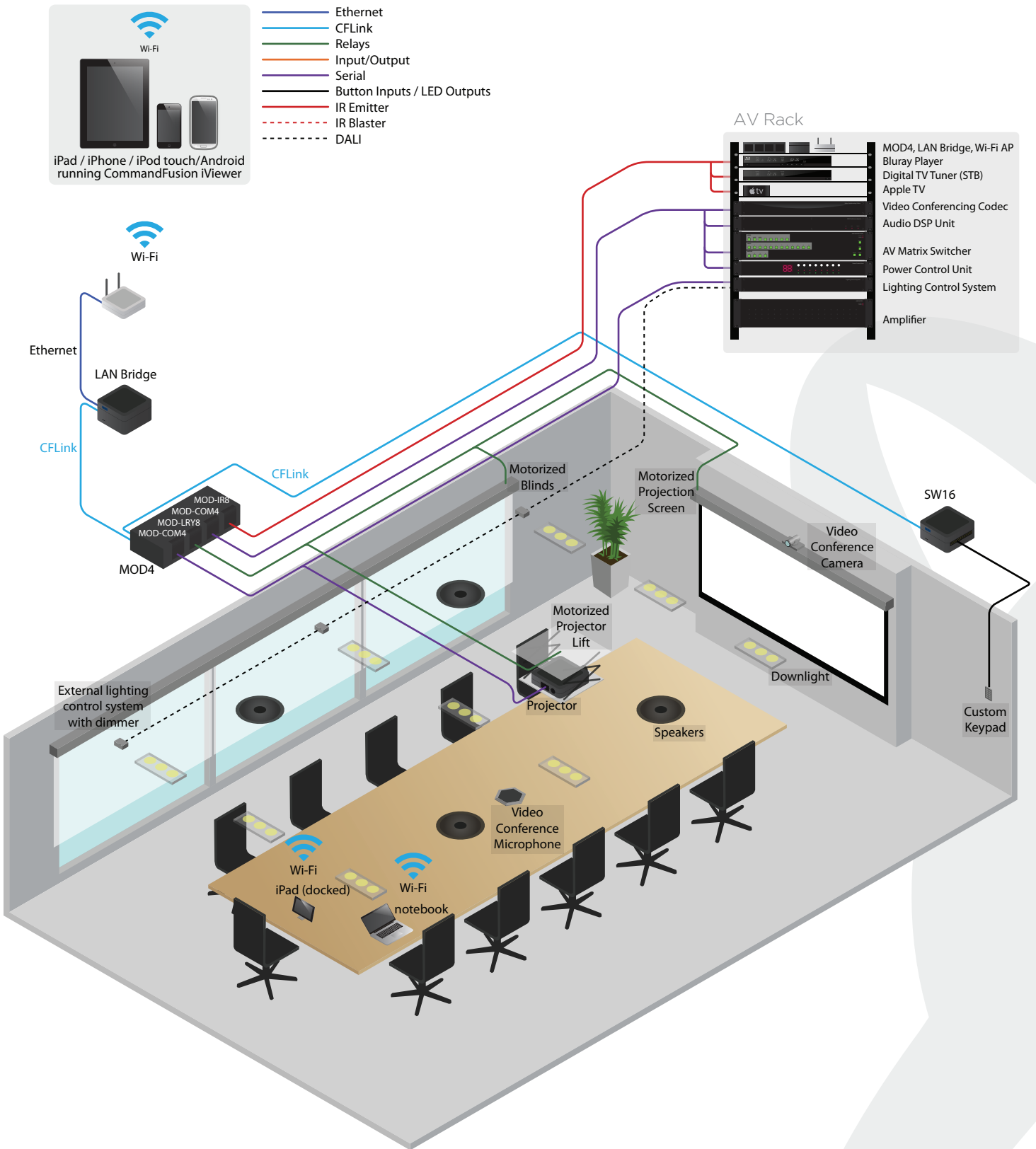




## Equipment Rack



## Boardroom Application Diagram









[www.commandfusion.com.au](http://www.commandfusion.com.au)